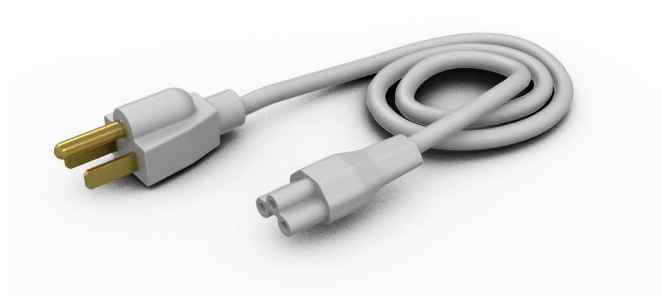


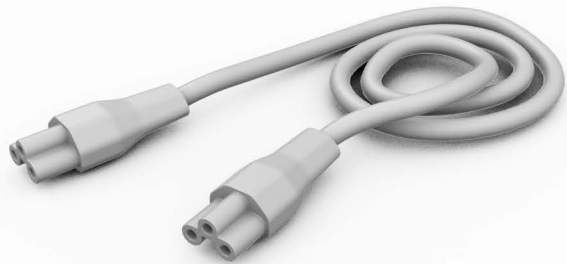
# TLIGHT UNDER CABINET LIGHTING

## Our advantages:

- Full ranges of products available:  
Length: 9.5/12/18/24/33/42 inch available  
Finish available: Brushed Nickel, Dark Bronze, White, other optional color.
- True Color
- Optional with Emergency battery backup #1
- Optional with Microwave sensor #2
- Energy Star, CEC/JA8 listed , Dimmable, Damp Location
- 5 years warranty for fixtures
- Easy Installation for both Plug in and Hardwire built in
- Single CCT or Switchable CCT version available

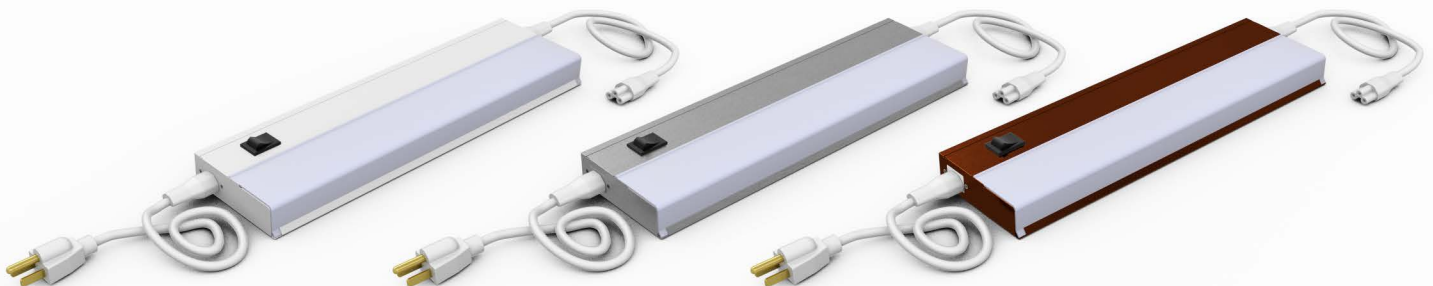


Plug In Cord (36", Model # PC1)



Linking Cord (18", Model # LC1)

## Finish:



White (WH)

Brushed Nickel (BN)

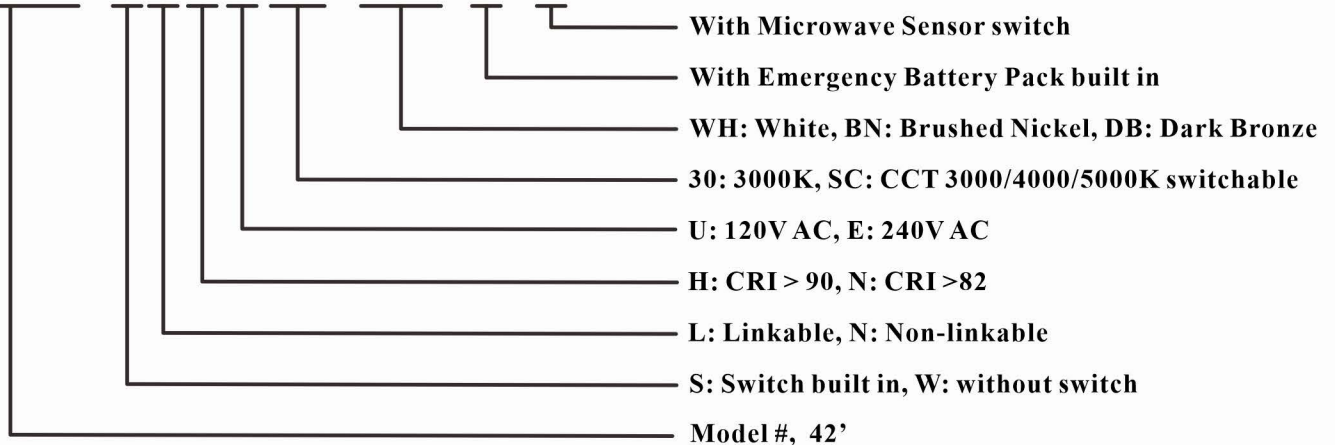
Dark Bronze (DB)



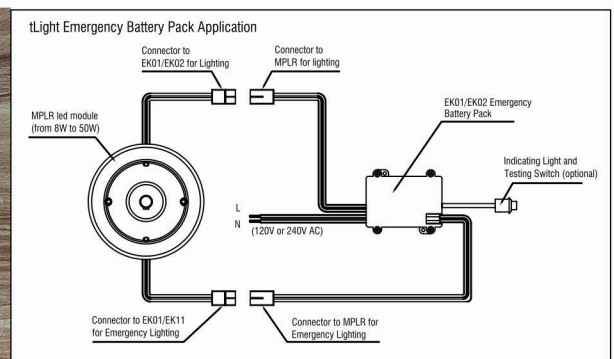
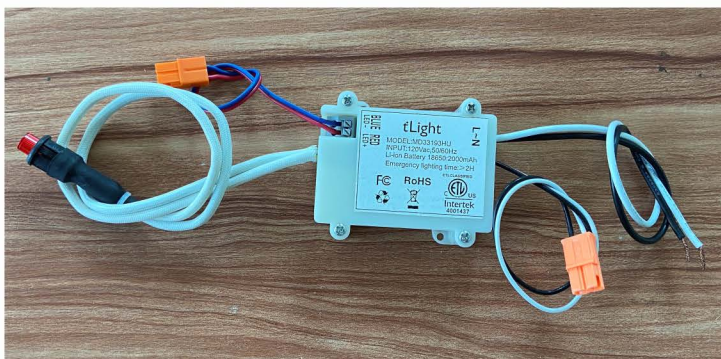
# Accessories

## Ordering Code Example:

**11710-SLHU30-WH-E-S**



## # 1: Optional Emergency Battery Back (Built in)



**Model #: EK03**

**Input: AC 120V or 240V, 50/60Hz**

**Battery: 2400 mAH, Lithium battery**

**Emergency Light output: 200 lm, > 3 hours (custom setting available at factory)**

**Max Ambient Temp : (-40F-110 oF) (-20° -43° )**

**3 years warranty for battery**

**# 1: Wires & connectors are subjected to requirements**

**# 2: Emergency Light output are subjected to requirements.**

## #2 Optional with Microwave sensor

**Model #: PCM01**

**Input: AC 120V or 240V, 50/60Hz**

**Output: AC 120 or 240V, 50/60Hz**

**Current: 5A**

**Motion Detection: 5M (diameter)**



# Application

9.5"



12"



18"



24"



33"



42"



## Various sizes

A variety of sizes and specifications can be applied to your needs.





# Specifications

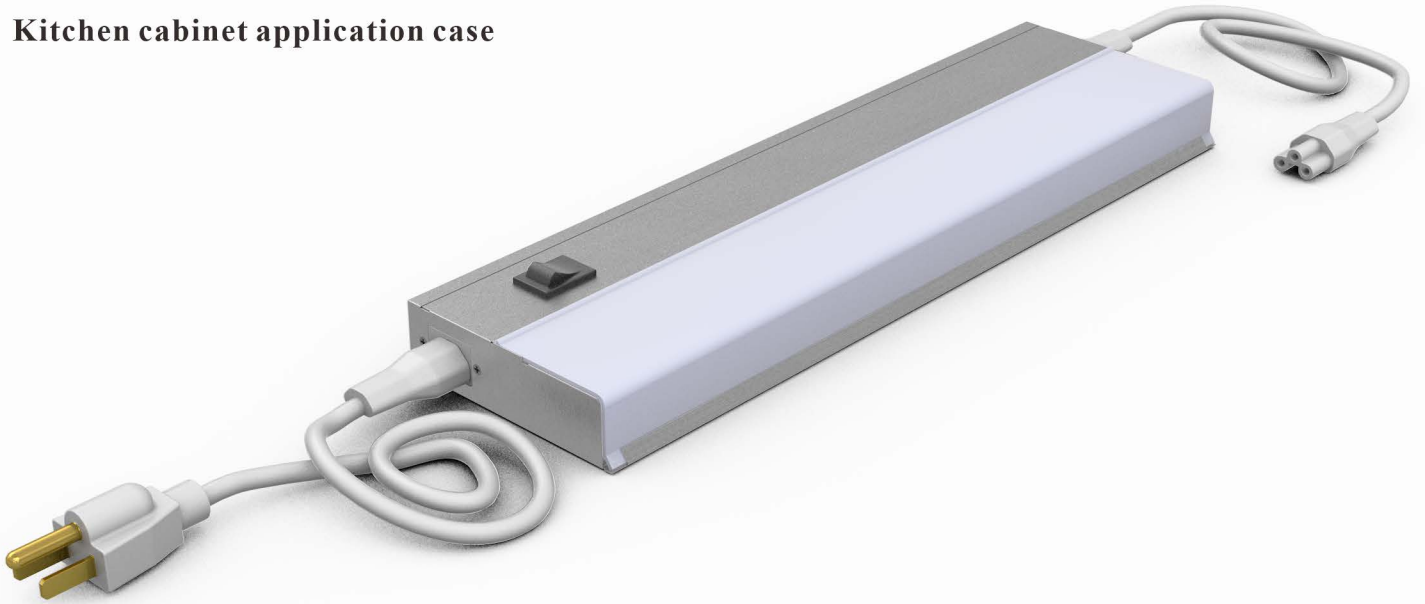
Model #	Size	Watts	Lumens	Linkable	CCT	CRI	Volts	IP	Difuser	Emergency	Motion Sensor	Optional Wattage
11710-SLHUSC06	9.5x3.5x1"	6	420	Yes	5000/4/3 or Switchable CCT	80/90	120/240	21	PC	Optional	Optional	6, 8
11711-SLHUSC08	12x3.5x1"	8	560	Yes	5000/4/3 or Switchable CCT	80/90	120/240	21	PC	Optional	Optional	8, 10, 12
11712-SLHUSC10	18x3.5x1"	10	700	Yes	5000/4/3 or Switchable CCT	80/90	120/240	21	PC	Optional	Optional	10, 12, 14
11713-SLHUSC14	24x3.5x1"	14	980	Yes	5000/4/3 or Switchable CCT	80/90	120/240	21	PC	Optional	Optional	14, 16, 18
11714-SLHUSC18	33x3.5x1"	18	1260	Yes	5000/4/3 or Switchable CCT	80/90	120/240	21	PC	Optional	Optional	18, 20, 22
11715-SLHUSC24	42x3.5x1"	24	1680	Yes	5000/4/3 or Switchable CCT	80/90	120/240	21	PC	Optional	Optional	24, 26, 28



# Application

## kitchen application

Kitchen cabinet application case





# Application

**applied to different scenarios**

**living room/showcase/wardrobe/cabinet/Bookcase**

