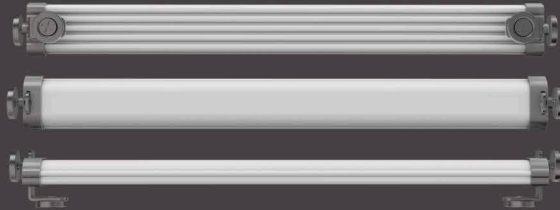


# MULTI PURPOSE LINEAR LED MODULES & RETROFITS



## Description:

tLight Multi Purpose Linear LED modules & Retrofits (Linear MPLR) are designed to provide the lighting industries with a revolutionary solution to upgrade to the latest LED technology. With our patented designs, most of the linear fixtures, wall fixtures, vanity are easily to adapt our Linear MPLR without wiring and screwing. Those fixtures can be turned to be LED fixtures just as easy as changing a light bulb.

With our unique designs, most of the linear fixtures, wall fixtures, vanity do not need to have wiring and screwing for the electrical parts such as power supply, sockets, even the LED modules, it is a big step of saving for the production cost and time. We call this a revolution as with our Linear MPLR, the lighting factories are not longer needed to assemble the lighting fixtures to be lighting fixtures, in fact, they only need to pack all the lighting parts in a box and ship to the customers, and those parts are installed with a Linear MPLR, then it becomes a complete lighting fixture. This is not just saving the production time and cost, but also allows the distributors the flexibility to stock less quantity of products. Furthermore, it is also allowed the end users the flexibility to select the suitable light that they wanted which all other LED fixtures can not be provided.

## Features:

Multiple mounting system provided, with unique patented designs, allow users to plug & play.

No competent electrician is required for installation#.

IP65.

As easy as installation of a light bulb.

“True Color” 93 CRI and 82 CRI version provided.

Multi wattages available from 8W to 32W

Dimmable and compatible with the major dimmers in the market.

DOB design with LM80 8000 hours LED chips.

Suitable for Industrial and Residential Fixtures.

Suitable for Linear Fixtures, Wall, Ceiling and Vanity.

5 years warranty.

## Control & Dimming:

120V or 240V AC 50/60 Hz

Leviton: IP110, DVCL153P-WH, CT-600P-BL, MACL153M, CPL06-10Z,

Lutron: 6674-P, VPM10-iL, 6672-L, 6681, CTCL-153PD, S-600P, CF1000P, CTELV-303P, LGCL-153PL, VP1-6-iL, PD-6WCL, VPM10, MACL153M

Cooper: DLC03P, Legrand: 341107-01/15

## Safety & Qualifications:

CE, FCC, ETL, Energy Star.

Patent No.: 201621098755.0



ETL, CE, RoHS, FCC.

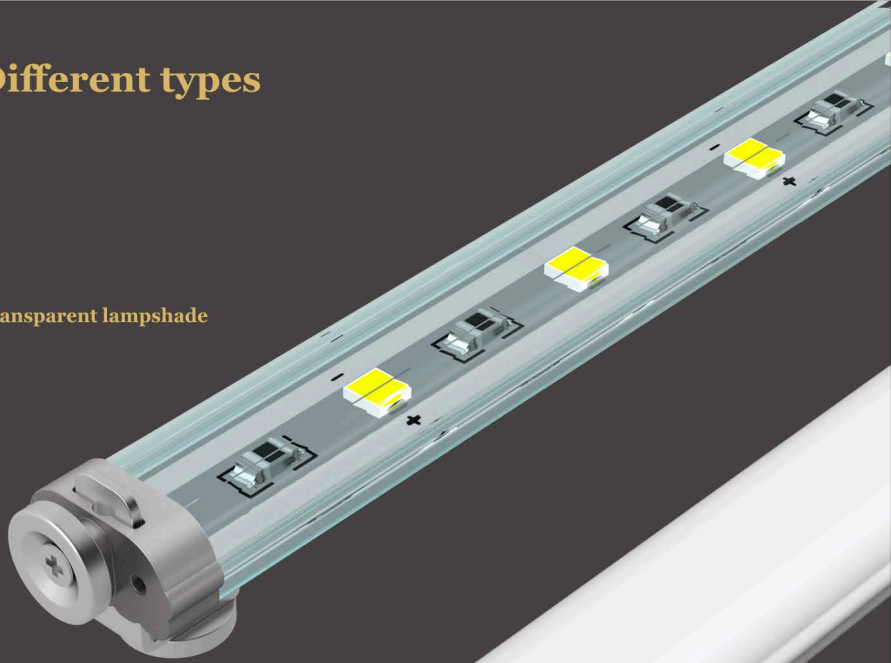
[www.tlight.cc](http://www.tlight.cc)

RoHS



## Different types

Transparent lampshade

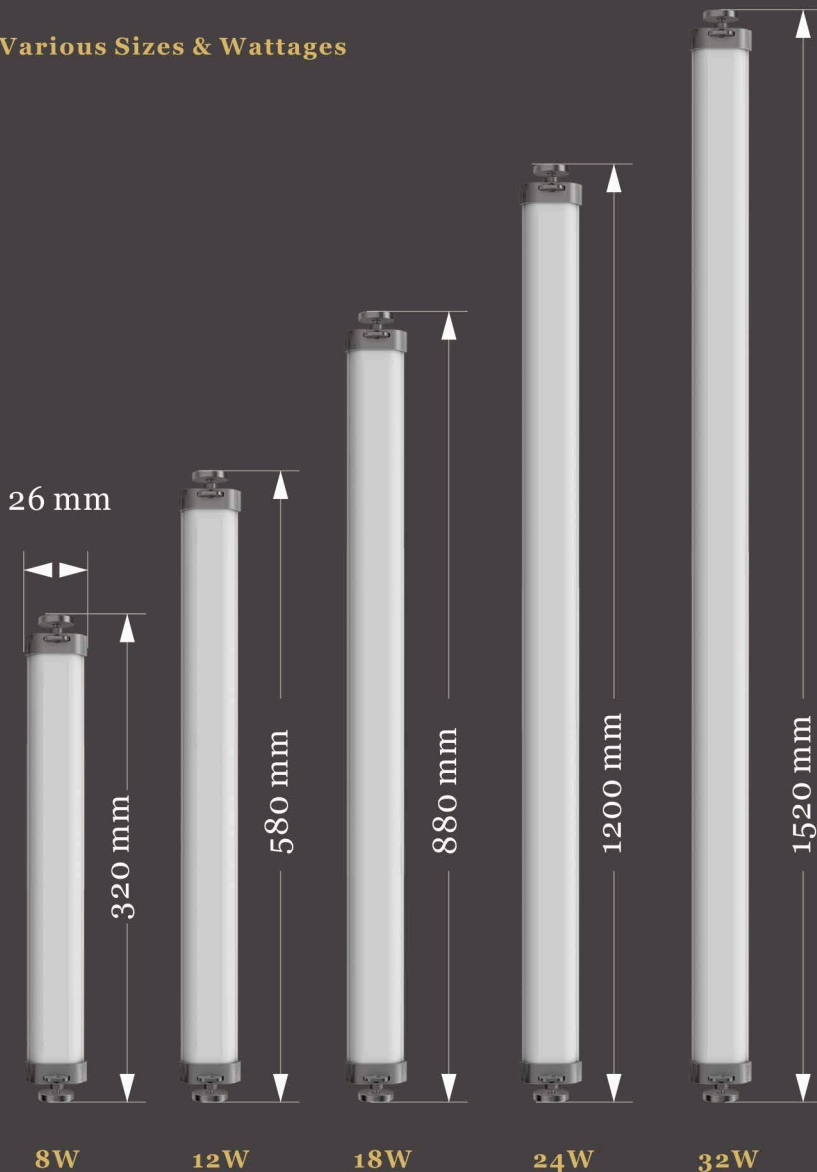


Matte lampshade



# Linear LED Modules & Retrofits

Various Sizes & Wattages



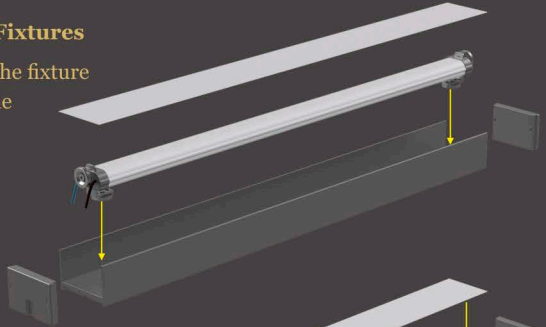
# MULTI PURPOSE LINEAR LED MODULE AND RETROFIT

Model #	Mc1405	Mc1408	MC1412	MC1418	MC1324	Mc1435
Input Wattage (W)	5	8	12	18	24	35
Input Voltage Range (V)	120 or 240					
Delivered Lumens (lm)	400	680	1020	1530	2040	2720
Efficacy (lm/W)	85					
Color Rendering Index (CRI)	>83					
Color Temperature (CCT)	3000K(optional 2700K/3500K/4000K/5000K/6400K)					
Equivalent Wattage	25	40	60	100	150	300
Beam Angle	120°					
Power Factor	0.9					
MAX THD (%)	34					
Ambient Temp (°F)	(-4°F-110°F) (-20°C-43°C)					
LM-79	Yes					
LM-80 (8000 hours)	Yes					
Safety	ETL/CECE					
Fixture Mounting:	Ceiling, Vanity, Wall, Commercial Fixture					
Application Environment	Dry and Damp Location					
Dimming compatible	Yes, SCR Dimming					
0-10V Dimming	NO					
Compatible Dimmers	Leviton: IPI10, DVCL153P-WH, CT-600P-BL, MACL153M, CPL06-10Z					
	Lutron: 6674-P, VPM10-iL, 6672-L, 6681, CTCL-153PD, S-600P, CF1000P, CTCLV-303P, LGCL-153PL, VP1-6-iL, PD-6WCL, VPM10, MACL153M					
	Cooper: DLC03P, Legrand: 341107-01/15					
	# Contact us for the latest compatible availability of the dimmer					
Length (mm)	226	320	580	880	1200	1520
Height (mm)	11.4					
Width:(mm)	24					
Weight:(g)	41	50	79	113	146	180
Life (Hours)	50,000					
Warranty (Years)	5 years					
Energy Star®	Yes, v. 2.0					
LED Lighting Facts®	Yes					

# Retrofit for existing T5/T8 Fixtures

## 1. Converting the existing T5/T8 Fixtures

Take down the existing sockets from the fixture and directly attach Linear MPLR to the fixture body by using the magnetic screws at the bottom.



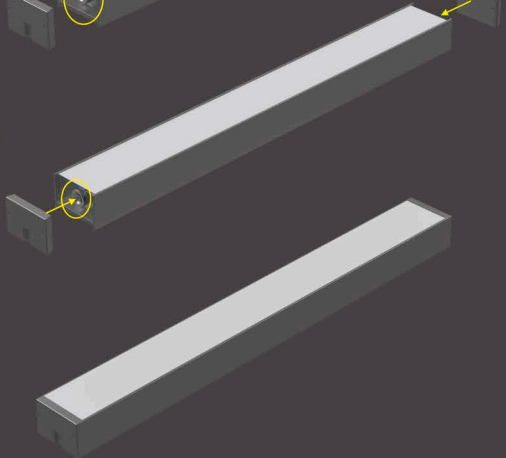
## 2. Adjust the position of the Linear MPLR

The height of the Linear MPLR can be adjusted. To the suitable height level for the best light. Distribution, it is simply adjusted the 2 screws At each side of the MPLR.



## 3. Attach the End Cap to the MPLR

As the Linear MPLR is built with 2 additional Magnetic screws at each side which is designed for the End Cap to be attached

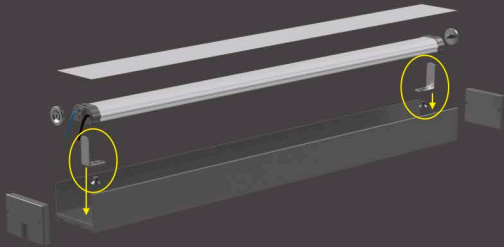


## 4. Fixture is converted to Linear LED Fixtures

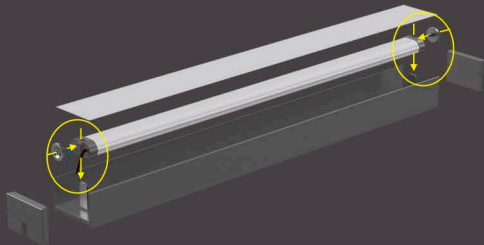
# Bracket Mounting System

The Linear MPLR also comes with different sizes of L type mounting brackets. The procedures for retrofit and new fixture implementation is only take 4 steps

1.



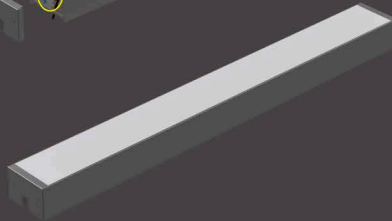
2.



3.



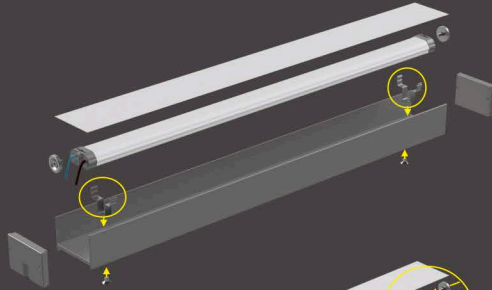
4.



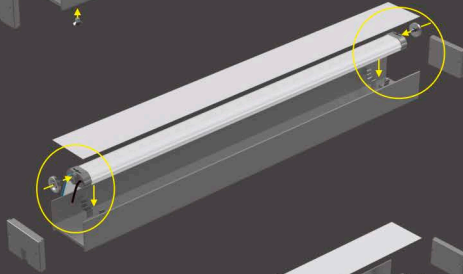
# Spring bracket Mounting

The Linear MPLR also supply with various size of spring bracket for the retrofit and new fixture implementation. It is simply few steps to be complete.

1.



2.



3.

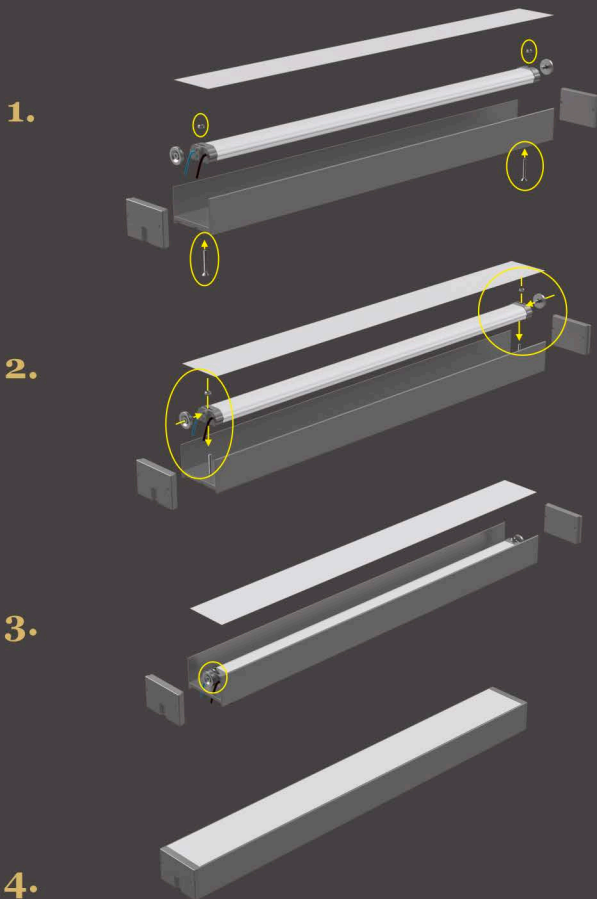


4.



# Direct Mounting the Linear MPLR

The Linear MPLR can also be directly mounted to the fixtures.  
It is simply use normal screws for mounting. It is only a few step work.





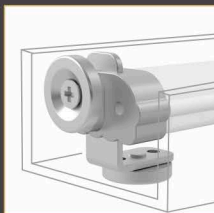
# Accessories & Ordering Code

---

## Order Code Example:

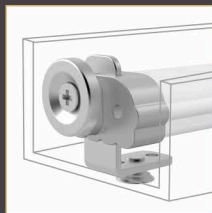


## Accessory:



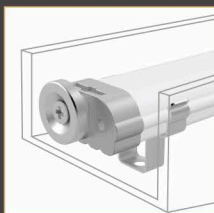
**Model #: MS3**

**Mounting hardware with double size magnetic**



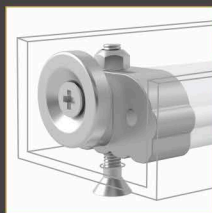
**Model #: MS4**

**Mounting hardware with single size magnetic**



**Model #: LBK**

**Mounting Bracket Stainless Steel**



**Model #: LHW**

**L type mounting Hardware**



**Application Example**

## #European Version

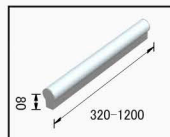
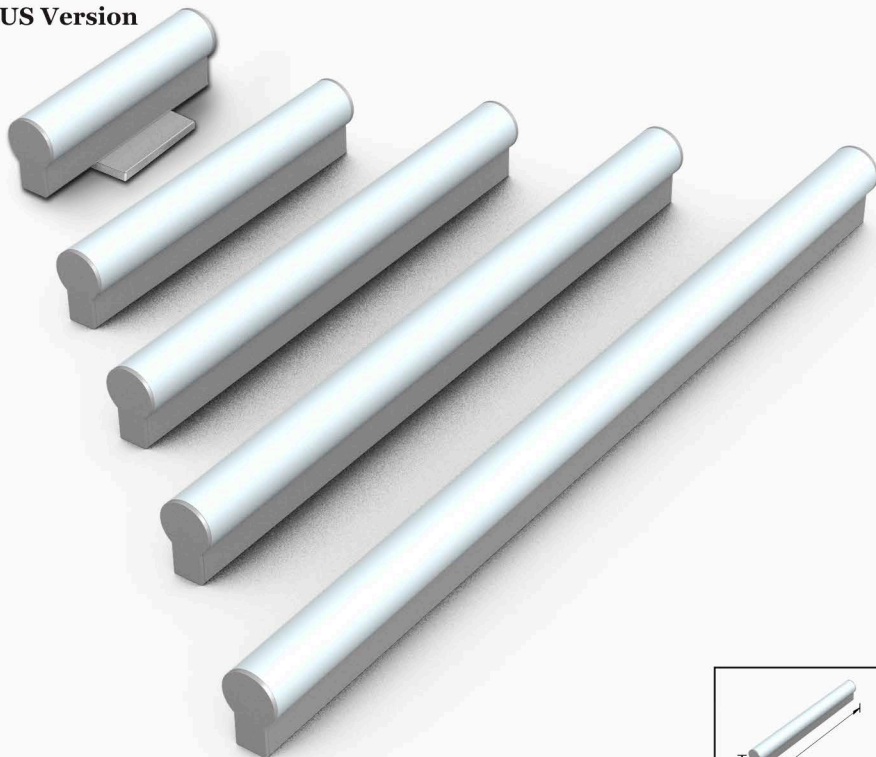


Model#	Size	Watts	Lumens	CCT	CRI	Voltage	IP	Diffuser	Control	Control mode	Finish Available
23168	40 x 80 x 320	8	720	2700	90	120 or 240	44	PMMA	SCR/Digital Dimmer	Dimming	Brushed Nickel (BN), Optional: Blue, Red, White, Green, Pink
23167	40 x 80 x 580	12	1080	2700	90	120 or 240	44	PMMA	SCR/Digital Dimmer	Dimming	
23166	40 x 80 x 880	17	1530	2700	90	120 or 240	44	PMMA	SCR/Digital Dimmer	Dimming	
23165	40 x 80 x 1200	25	2250	2700	90	120 or 240	44	PMMA	SCR/Digital Dimmer	Dimming	

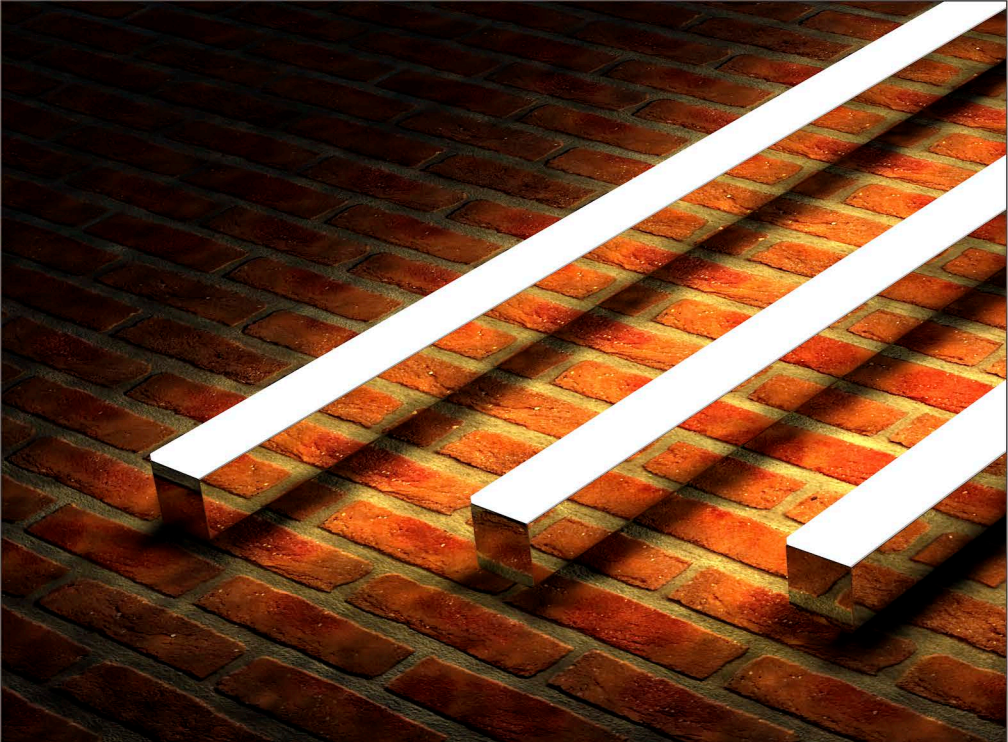




## #US Version



Model#	Size	Watts	Lumens	CCT	CRI	Voltage	IP	Diffuser	Control	Control mode	Finish Available
23246	60 x 80 x 320	8	720	2700	90	120 or 240	44	PMMA	SCR/Digital Dimmer	Dimming	Brushed Nickel (BN), Optional: Blue, Red, White, Green, Pink
23247	60 x 80 x 580	12	1080	2700	90	120 or 240	44	PMMA	SCR/Digital Dimmer	Dimming	
23248	60 x 80 x 880	17	1530	2700	90	120 or 240	44	PMMA	SCR/Digital Dimmer	Dimming	
23249	60 x 80 x 1200	25	2250	2700	90	120 or 240	44	PMMA	SCR/Digital Dimmer	Dimming	
23246-IC8	60 x 115 x 320	8	960	2700-6400	90	110-240	44	PMMA	SCR/Digital Dimmer	Dimming, Color Temp.	
23247-IC10	60 x 115 x 580	10	1200	2700-6400	90	110-240	44	PMMA	SCR/Digital Dimmer	Dimming, Color Temp.	
23248-IC15	60 x 115 x 880	17	2040	2700-6400	90	110-240	44	PMMA	SCR/Digital Dimmer	Dimming, Color Temp.	
23249-IC25	60 x 115 x 1200	25	3000	2700-6400	90	110-240	44	PMMA	SCR/Digital Dimmer	Dimming, Color Temp.	
23246-IR823	60 x 115 x 320	8	520	2700	80	110-240	44	PMMA	SCR/Digital Dimmer	Dimming, RGB	
247-IR1023	60 x 115 x 580	10	650	2700	80	110-240	44	PMMA	SCR/Digital Dimmer	Dimming, RGB	
248-IR15	60 x 115 x 880	17	1105	2700	80	110-240	44	PMMA	SCR/Digital Dimmer	Dimming, RGB	
23249-IR25	60 x 115 x 1200	25	1625	2700	80	110-240	44	PMMA	SCR/Digital Dimmer	Dimming, RGB	



Model#	Size	Watts	Lumens	CCT	CRI	Voltage	IP	Diffuser	Control	Control mode	Finish Available
23410	40 x 40 x 320	8	720	2700	90	120 or 240	44	PMMA	SCR/Digital Dimmer	Dimming	Brushed Nickel (BN), Optional: Blue, Red, White, Green, Pink
23411	40 x 40 x 580	12	1080	2700	90	120 or 240	44	PMMA	SCR/Digital Dimmer	Dimming	
23412	40 x 40 x 880	17	1530	2700	90	120 or 240	44	PMMA	SCR/Digital Dimmer	Dimming	
23413	40 x 40 x 880	25	2250	2700	90	120 or 240	44	PMMA	SCR/Digital Dimmer	Dimming	
23410-IC8	104 x 75 x 320	8	960	2700-6400	90	110-240	44	PMMA	SCR/Digital Dimmer	Dimming, Color Temp.	
23411-IC10	104 x 75 x 580	10	1440	2700-6400	90	110-240	44	PMMA	SCR/Digital Dimmer	Dimming, Color Temp.	
23412-IC15	104 x 75 x 880	17	1800	2700-6400	90	110-240	44	PMMA	SCR/Digital Dimmer	Dimming, Color Temp.	
23413-IC25	104 x 75 x 880	25	3000	2700-6400	90	110-240	44	PMMA	SCR/Digital Dimmer	Dimming, Color Temp.	
23410-IR8	104 x 75 x 320	8	520	2700	80	110-240	44	PMMA	SCR/Digital Dimmer	Dimming, RGB	
23411-IR10	104 x 75 x 580	10	780	2700	80	110-240	44	PMMA	SCR/Digital Dimmer	Dimming, RGB	
23412-IR15	104 x 75 x 880	17	975	2700	80	110-240	44	PMMA	SCR/Digital Dimmer	Dimming, RGB	
23413-IR25	104 x 75 x 880	25	1625	2700	80	110-240	44	PMMA	SCR/Digital Dimmer	Dimming, RGB	

