



LED DOWNLIGHT

Variable color LED downlight

(With Optional Emergency Battery Backup Pack & Motion Sensor switch)



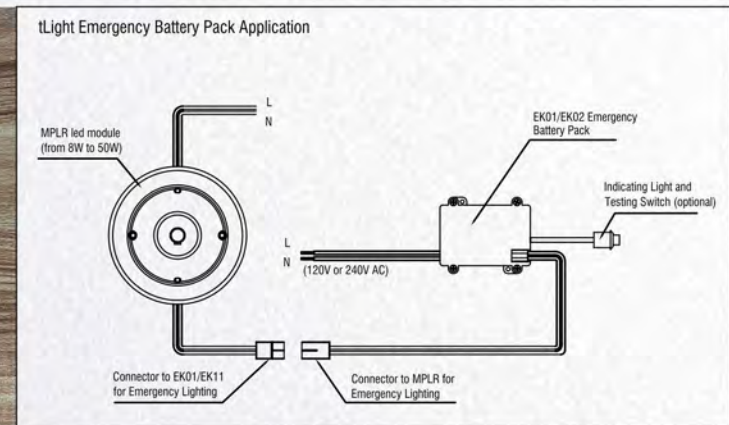
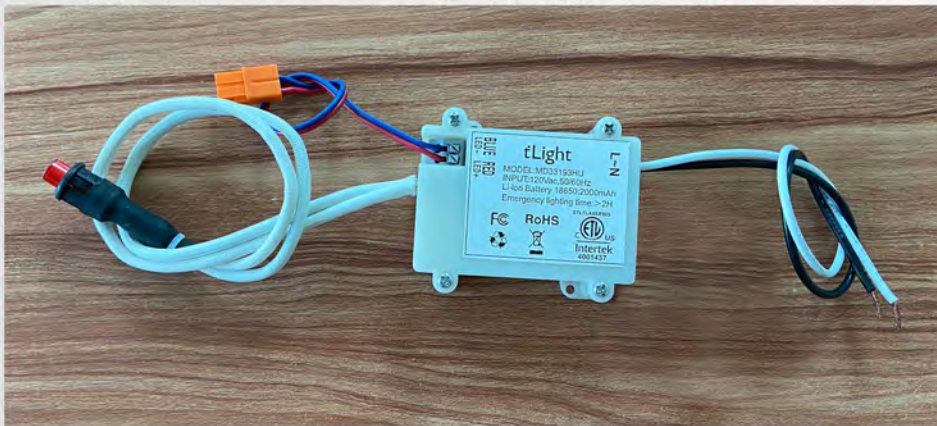
www.tlight.cc



OUR ADVANTAGES:

- * Full ranges of products available:
Sizes: 5.5, 7.2, 9.2, 11” available with multi series designs
Finish available: Brushed Nickel, Dark Bronze, White, other optional color.**
- * True Color, with optional multi CCT switchable version**
- * Optional with Emergency battery backup #1**
- * Optional with Microwave sensor #2**
- * Energy Star, CEC/JA8 listed , Dimmable, Wet Location**
- * 5 years warranty for fixtures**
- * Easy Installation for Hardwire J-Box and optional for Recessed Cans.**
- * Modulization of design and manufacturing, very competitive pricing**

1: Optional Emergency Battery Back



Model #: E1 ,E2

Input: AC 120V or 240V, 50/60Hz

Battery: 2400 mAH, Lithium battery

Emergency Light output: 200 lm, > 3 hours

Size: 72 x 60 x 23mm

Max Ambient Temp : (-40F-110 °F) (-20°C-43°C)

3 years warranty for battery

1: Wires & connectors are subjected to requirements

2: Emergency Light output are subjected to requirements.

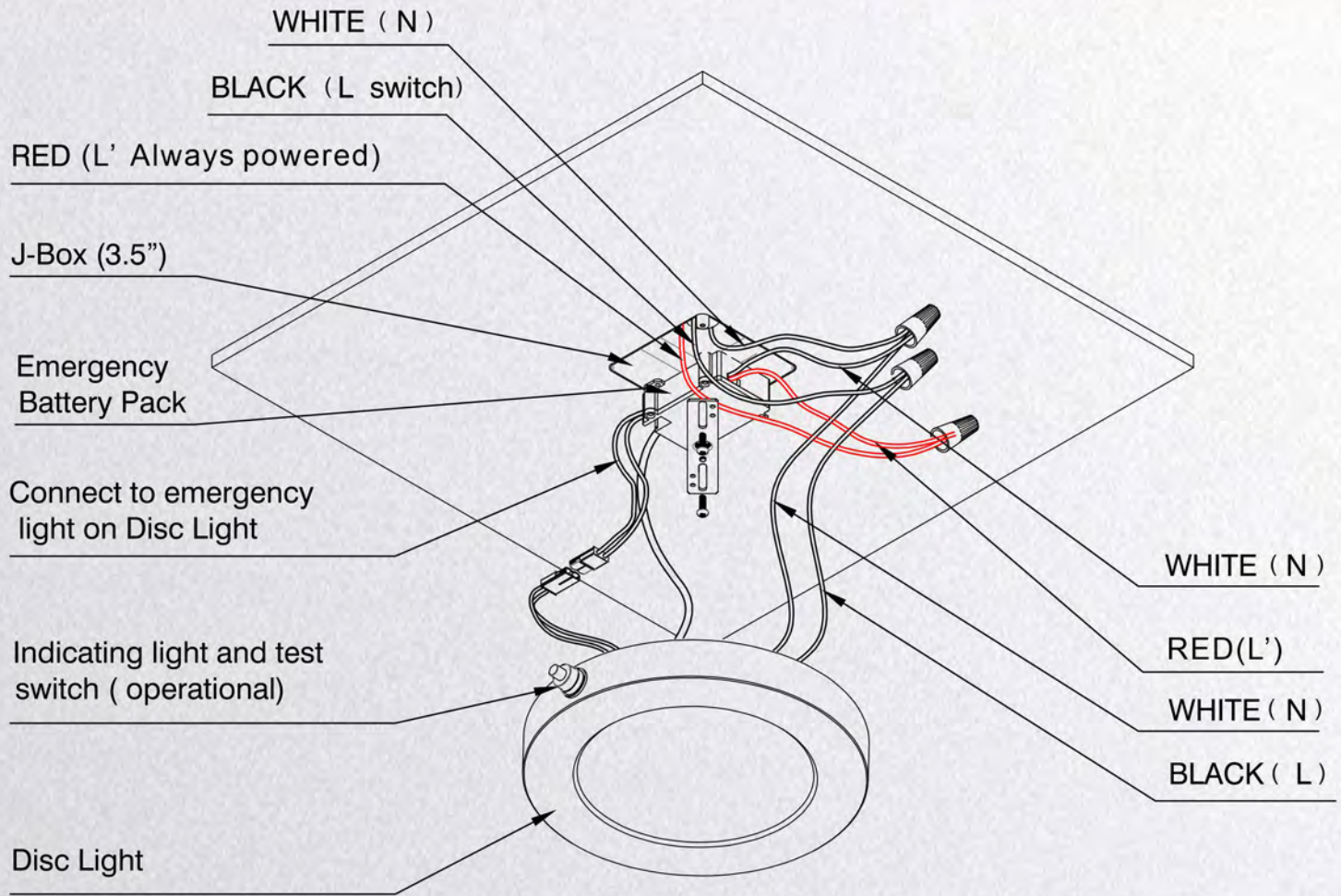
EMERGENCY BATTERY PACK

Model #	Size (In)	Size (mm)	Watts	Lumens	Emergency Time(H)
E1	Length:2.83" width: 2.36" height: 0.9"	Length:72mm width:60mm height:23mm	2	220	3
E2			4	440	1.5

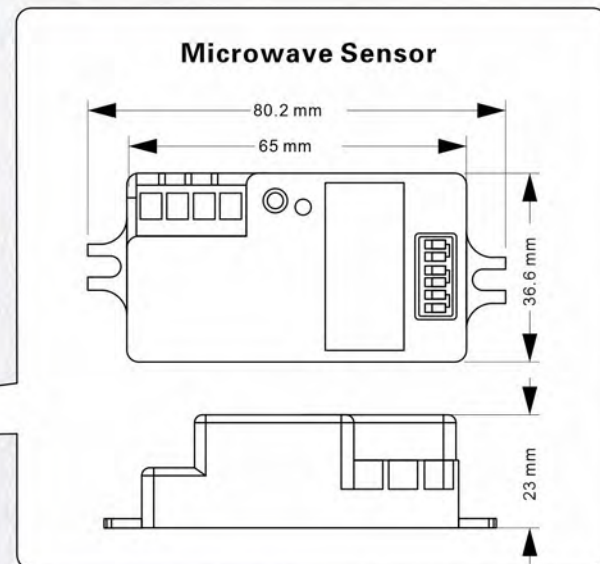
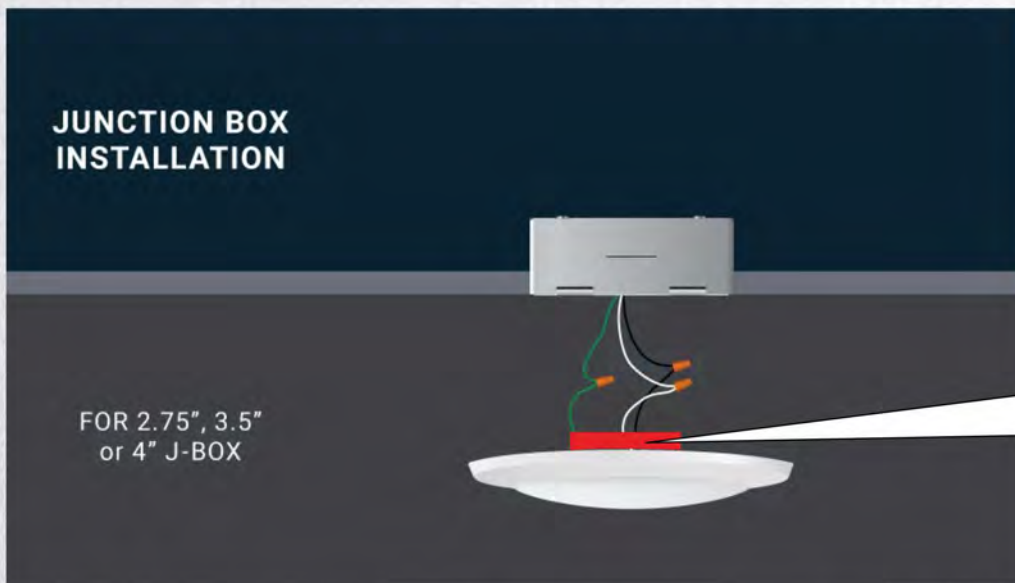
How does E1 or E2 Emergency Battery Pack work with Downlight series?

E1 or E2 are the Integrated Emergency Battery Pack (circuit board and Lithium battery are all in one),

Wiring and Installation



#2 Optional with Microwave sensor



Model #: PCM01

Input: AC 120V or 240V, 50/60Hz

Output: AC 120 or 240V, 50/60Hz

Current: 3A

Sensor	DetectionRange	DetectionArea	DetectionAngle	DaylightSensor	HoldTime
Microwave	Max14M	10%/50%/75%/100%	180	2/10/50 lux/Disable	5s/90s/5min/15min

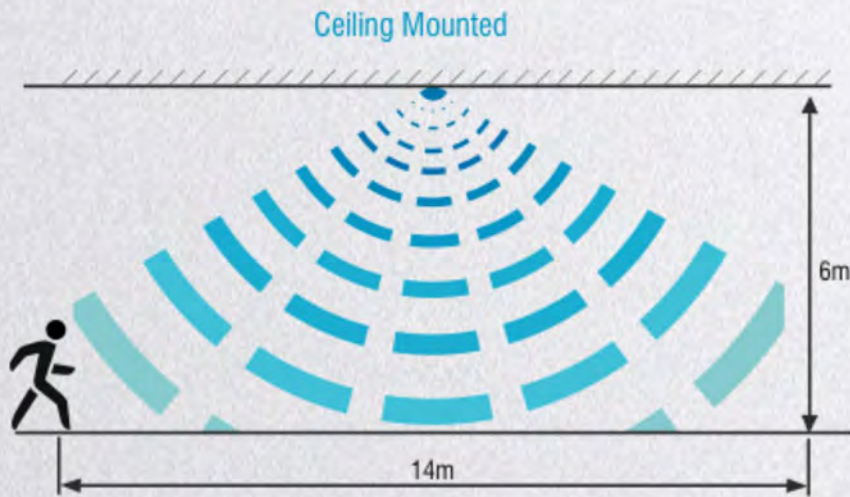
Ordering Code Example:

21316-ACHU3013-WH-E1

Model #, ø7.2

- E1: Emergency Battery Pack, M1: Microwave Sensor
- WH: White, BN: Brushed Nickel, DB: Dark Bronze
- 13 = 13W, Optional wattage available
- 30: 3000K, SC: CCT 3000/4000/5000K switchabl
- U: 120V AC, E: 240V AC
- H: CRI > 90, N: CRI >82
- AC: Built in AC Driver DC: External DC driver

Features of detections:

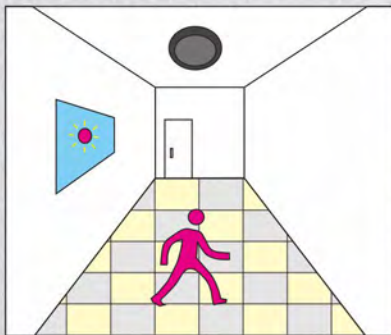


* Microwave Detection 14 M at 6 M height

* Detection range can be set to:

10%/50%/75%/100%

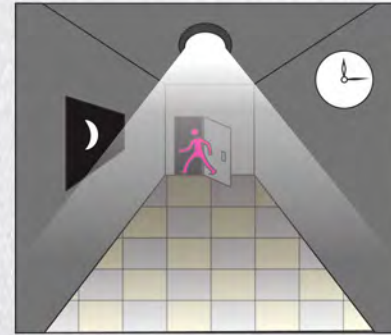
* 180 degree Detection



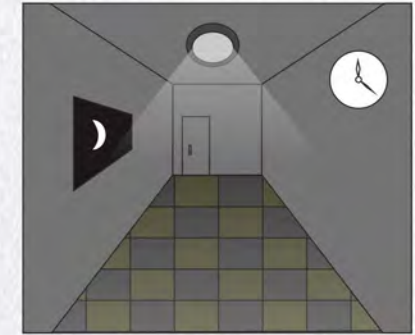
Day time Mode
When daylight is sufficient
(it can be set to 2/10/50 lux/Disable level)
Then even the motion is detected
The light is still off



Night time Mode
When light is not sufficient
(it can be set to 2/10/50 lux/Disable level)
Then when the motion is detected
The light is turned on



Night time Mode,
The light stays on until the
movement disappears



Night time Mode,
After motion is disappeared
The light is turned Off
Time delay can be set to: 5s/90s/
5min/15min



21323-BK



21323-CH



21323_BN



21323-WH

Multiple sizes free choice

Model #	Size(In)	Size (mm)	Watts	Lumens	CCT (000)	CRI	Volts	IP	Diffuser	Dimmable	Emergency Battery Pack E1,E2	Motion Sensor #2	Finish
21323 ACHU3010 WH	ø5.5 x 0.8"	ø127 x 20	10	700	27/30/35/ 40/50 Switchable	90	120 or 240	44	PC	Yes, Triac	Optional 200Lm 3H	NA	White (WH)
21324 ACHU3013 WH	ø7.2 x 0.8"	ø178 x 20	13	910	27/30/35/ 40/50 Switchable	90	120 or 240	44	PC	Yes, Triac	Optional 200Lm 3H	NA	Matt Black (BK)
21325 ACHU3018 WH	ø9 x 0.8"	ø228 x 20	16	1120	27/30/35/ 40/50 Switchable	90	120 or 240	44	PC	Yes, Triac	Optional 200Lm 3H	NA	Chrome (CH)
21326 ACHU3022 WH	ø11 x 0.8"	ø280 x 20	20	1400	27/30/35/ 40/50 Switchable	90	120 or 240	44	PC	Yes, Triac	Optional 200Lm 3H	NA	Brushed Nickel (BN)
21327 ACHU3024 WH	ø13 x 0.8"	ø330 x 20	24	1680	27/30/35/ 40/50 Switchable	90	120 or 240	44	PC	Yes, Triac	Optional 200Lm 3H	NA	Dark Bronze (DB)

All Lumen data in this catalog is based on 90 CRI, for 80 CRI, the lumen output will be 15% higher

LED DOWNLIGHT





LED DOWNLIGHT

21328 21329 21330 21331 21332



21328-BK



21328-CH



21330_BN



21330-WH

Multiple sizes free choice

Model #	Size(In)	Size (mm)	Watts	Lumens	CCT (000)	CRI	Volts	IP	Diffuser	Dimmable	Emergency Battery Pack E1,E2	Motion Sensor #2	Finish
21328 ACHU3010 WH	5x5 x 0.8"	127 x127 x 20	10	700	27/30/35/ 40/50 Switchable	90	120 or 240	44	PC	Yes, Triac	Optional 200Lm 3H	NA	White (WH)
21329 ACHU3013 WH	7x7 x 0.8"	178 x178 x 20	13	910	27/30/35/ 40/50 Switchable	90	120 or 240	44	PC	Yes, Triac	Optional 200Lm 3H	NA	Matt Black (BK)
21330 ACHU3018 WH	9x9 x 0.8"	228 x228 x 20	16	1120	27/30/35/ 40/50 Switchable	90	120 or 240	44	PC	Yes, Triac	Optional 200Lm 3H	NA	Chrome (CH)
21331 ACHU3022 WH	11x11 x 0.8"	280 x280 x 20	20	1400	27/30/35/ 40/50 Switchable	90	120 or 240	44	PC	Yes, Triac	Optional 200Lm 3H	NA	Brushed Nickel (BN)
21332 ACHU3024 WH	13x13 x 0.8"	330 x330 x 20	24	1680	27/30/35/ 40/50 Switchable	90	120 or 240	44	PC	Yes, Triac	Optional 200Lm 3H	NA	Dark Bronze (DB)

All Lumen data in this catalog is based on 90 CRI, for 80 CRI, the lumen output will be 15% higher



LED DOWNLIGHT

21319 21320 21321 21322 18

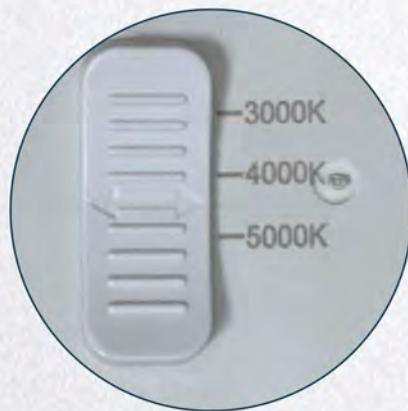




Multiple colors, free choice

One host with four colors, you can choose freely according to your own preferences





One lamp, multiple color temperature adjustable



3000K



4000K



5000K



White (WH)



Brushed Nickel (BN)



Matt Black (BK)



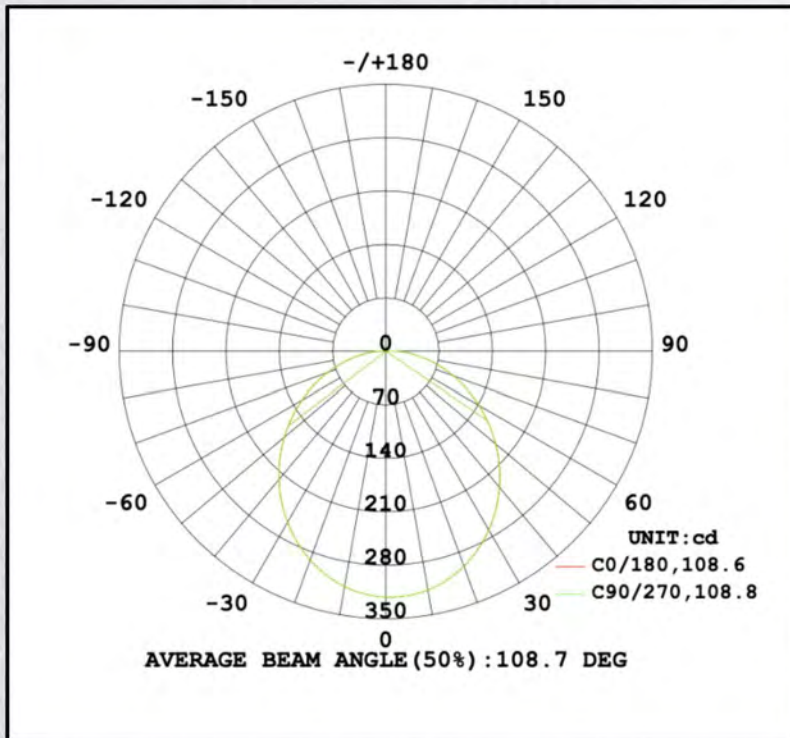
Chrome (CH)

Multiple sizes free choice

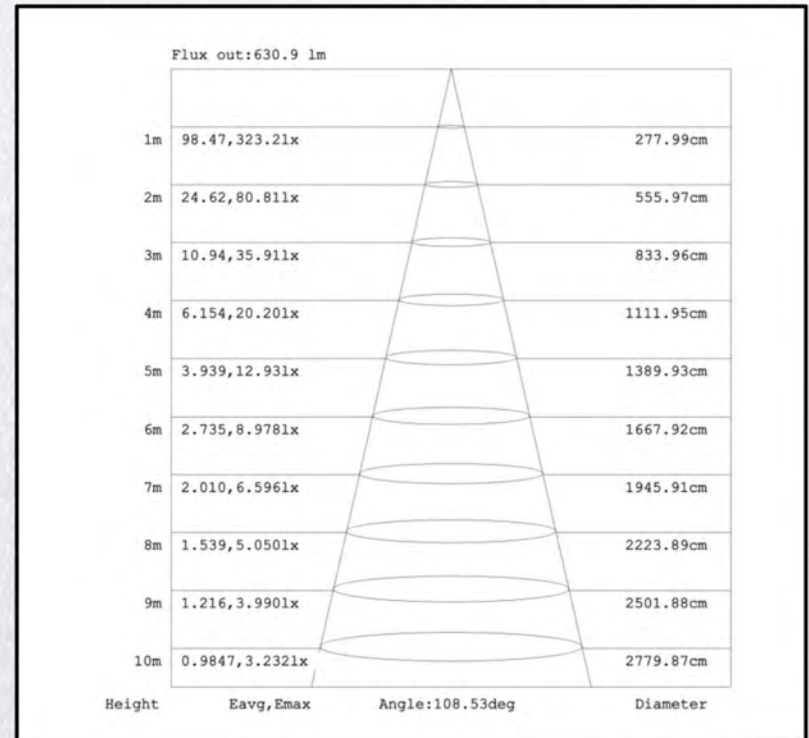
Model #	Size(In)	Size (mm)	Watts	Lumens	CCT (000)	CRI	Volts	IP	Diffuser	Dimmable	Emergency Battery Pack E1,E2	Motion Sensor #2	Finish
21309 ACHUSC10 WH	ø5.5 x 1.2"	ø140 x 30	10	770	3/4/5 Switchable	80 or 90	120 or 240	21/44	PC	Yes, Triac	Optional 270Lm 2.5H	Optional Microwave	White (WH)
21310 ACHUSC13 WH	ø7.5 x 1.5"	ø190 x 38	13	1020	3/4/5 Switchable	80 or 90	120 or 240	21/44	PC	Yes, Triac	Optional 270Lm 2.5H	Optional Microwave	Matt Black (BK)
21311 ACHUSC17 WH	ø9.5 x 2"	ø241 x 51	17	1300	3/4/5 Switchable	80 or 90	120 or 240	21/44	PC	Yes, Triac	Optional 270Lm 2.5H	Optional Microwave	Chrome (CH)
21312 ACHUSC22 WH	ø11 x 2.5"	ø280 x 64	22	1700	3/4/5 Switchable	80 or 90	120 or 240	21/44	PC	Yes, Triac	Optional 270Lm 2.5H	Optional Microwave	Brushed Nickel (BN)
													Dark Bronze (DB)

All Lumen data in this catalog is based on 90 CRI, for 80 CRI, the lumen output will be 15% higher

Diagram showed model # 21310-ACHU3013-WH



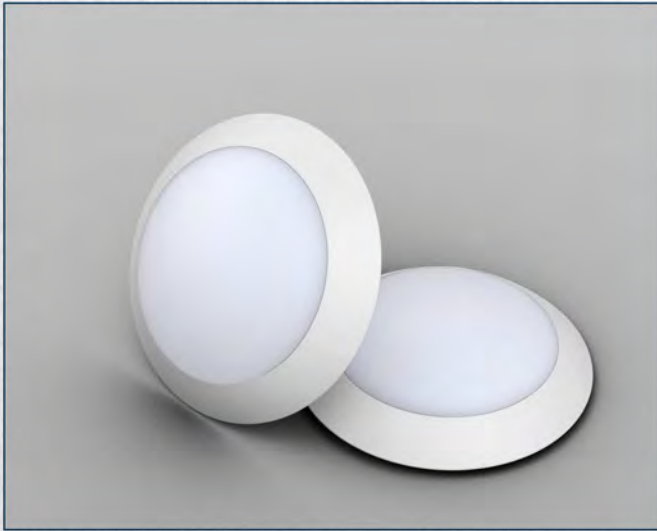
Luminous Intensity Distribution Diagram



The Curves indicate the illuminated area and the average illumination when the luminaire is at difference distance

*The above diagrams represent similar performance for model # 21315/21316/21317/21318/21319/21320/21321/21322. Please contact us if any specified IES file is needed, info@tlight.cc





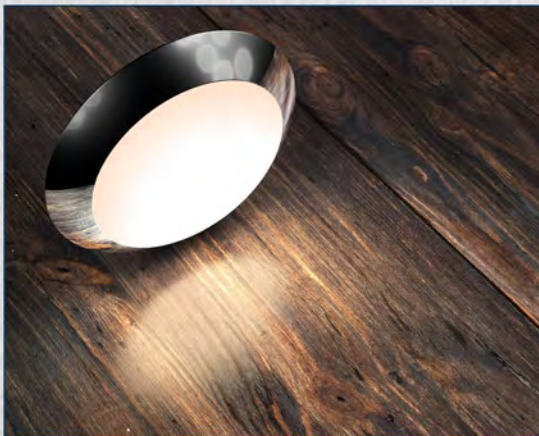
Multiple colors, free choice

One host with four colors, you can choose freely according to your own preferences





One lamp, multiple color temperature adjustable



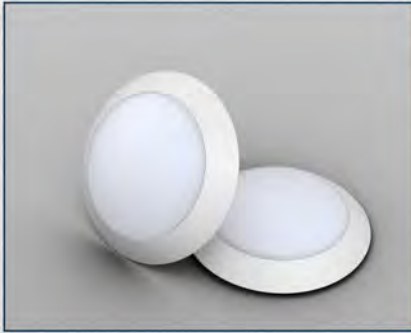
3000K



4000K



5000K



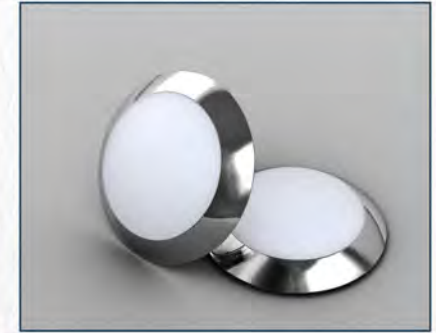
White (WH)



Brushed Nickel (BN)



Matt Black (BK)

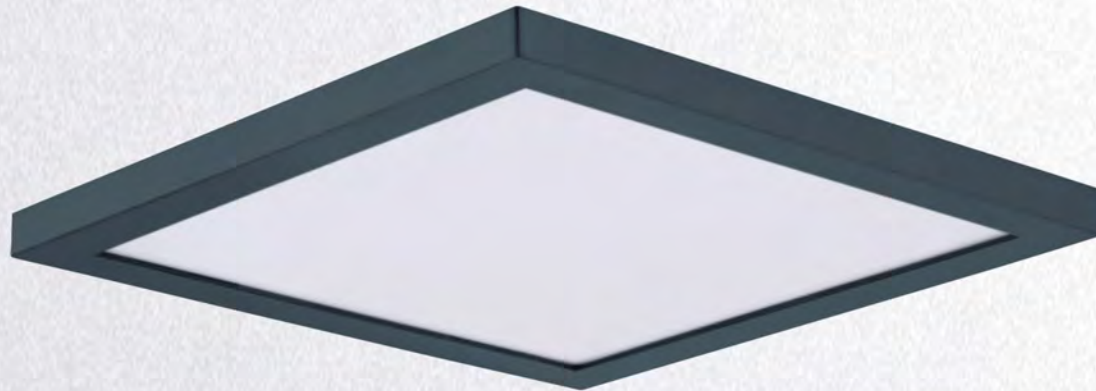


Chrome (CH)

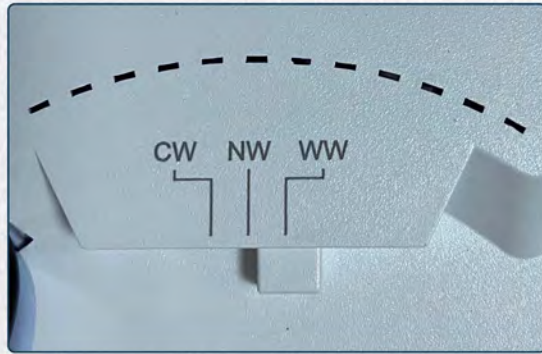
Multiple sizes free choice

Model #	Size(In)	Size (mm)	Watts	Lumens	CCT (000)	CRI	Volts	IP	Diffuser	Dimmable	Emergency Battery Pack E1,E2	Motion Sensor #2	Finish
21305 ACHUSC10 WH	ø5.5 x 1.2"	ø140 x 30	11	770	3/4/5 Switchable	80 or 90	120 or 240	21/44	PC	Yes, Triac	Optional 270Lm 2.5H	Optional Microwave	White (WH)
21306 ACHUSC13 WH	ø7.5 x 1.5"	ø190 x 38	13	1020	3/4/5 Switchable	80 or 90	120 or 240	21/44	PC	Yes, Triac	Optional 270Lm 2.5H	Optional Microwave	Matt Black (BK)
21307 ACHUSC17 WH	ø9.5 x 2"	ø241 x 51	17	1300	3/4/5 Switchable	80 or 90	120 or 240	21/44	PC	Yes, Triac	Optional 270Lm 2.5H	Optional Microwave	Chrome (CH)
21308 ACHUSC22 WH	ø11 x 2.5"	ø280 x 64	22	1700	3/4/5 Switchable	80 or 90	120 or 240	21/44	PC	Yes, Triac	Optional 270Lm 2.5H	Optional Microwave	Brushed Nickel (BN)
													Dark Bronze (DB)

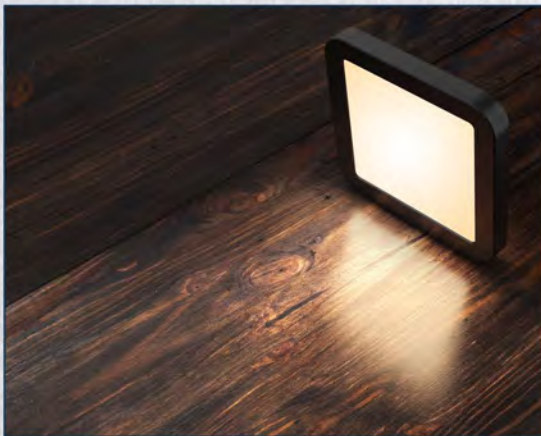




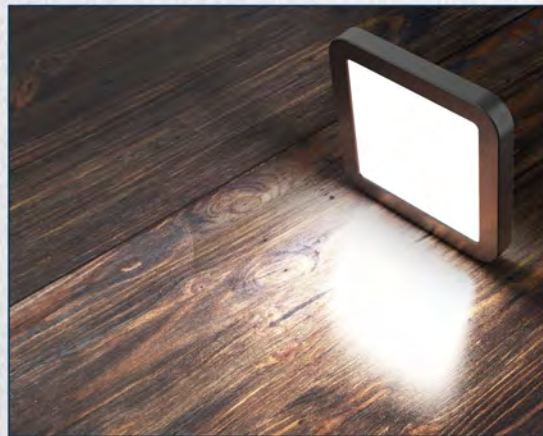
Available in white, matte black, and brushed nickel



One lamp, multiple color temperature adjustable



3000K



4000K

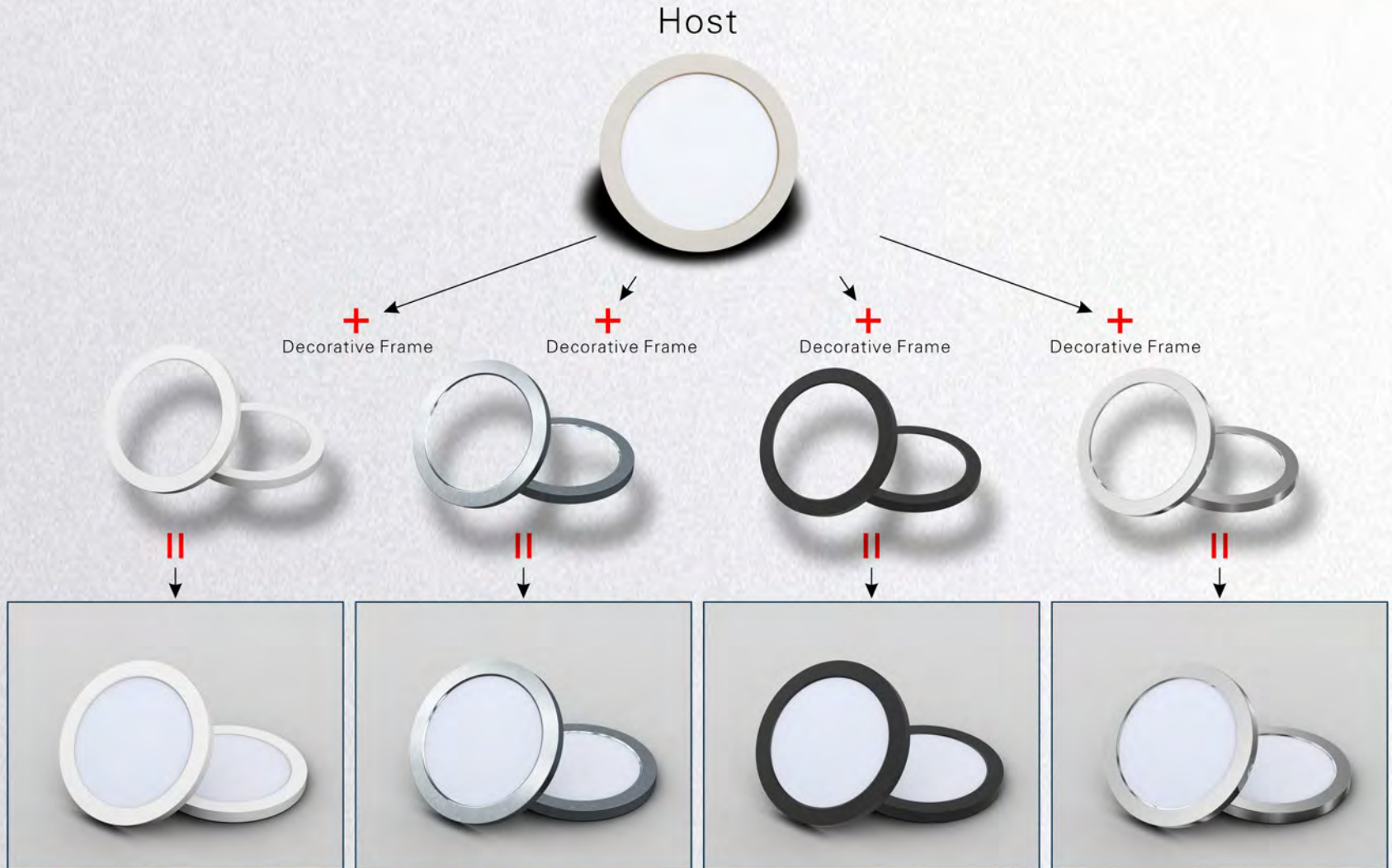


5000K



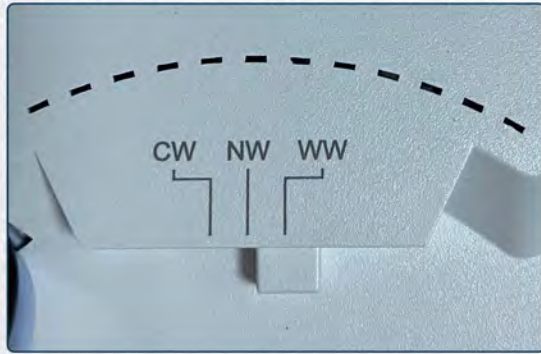
Multiple sizes free choice

Model #	Size(In)	Size (mm)	Watts	Lumens	CCT (000)	CRI	Volts	IP	Diffuser	Dimmable	Emergency Battery Pack E1,E2	Motion Sensor #2	Finish
21319 ACHUSC10 WH	5.5x5.5x0.7"	140x140x18	10	700	3/4/5 Switchable	80 or 90	120 or 240	21/44	PMMA	Yes, Triac	Optional 270Lm 2.5H	Optional Microwave	White (WH)
21320 ACHUSC13 WH	7.2x7.2x0.7"	183x183x18	13	910	3/4/5 Switchable	80 or 90	120 or 240	21/44	PMMA	Yes, Triac	Optional 270Lm 2.5H	Optional Microwave	White (WH)
21321 ACHUSC18 WH	9x9x0.8"	229x229x22	18	1190	3/4/5 Switchable	80 or 90	120 or 240	21/44	PMMA	Yes, Triac	Optional 270Lm 2.5H	Optional Microwave	White (WH)
21322 ACHUSC22 WH	11x11x0.8"	280x280x22	22	1540	3/4/5 Switchable	80 or 90	120 or 240	21/44	PMMA	Yes, Triac	Optional 270Lm 2.5H	Optional Microwave	White (WH)



Free collocation to reduce inventory

A host with four colors, you can freely DIY switch different decorative color rings according to your own preferences. Only need to stock a host, equipped with a part of the four-color decorative rings, and then adjust the number of decorative color rings according to the sales situation, which can greatly reduce the inventory of the lamps and increase the working capital.



One lamp, multiple color temperature adjustable



3000K



4000K



5000K



White (WH)



Brushed Nickel (BN)



Matt Black (BK)

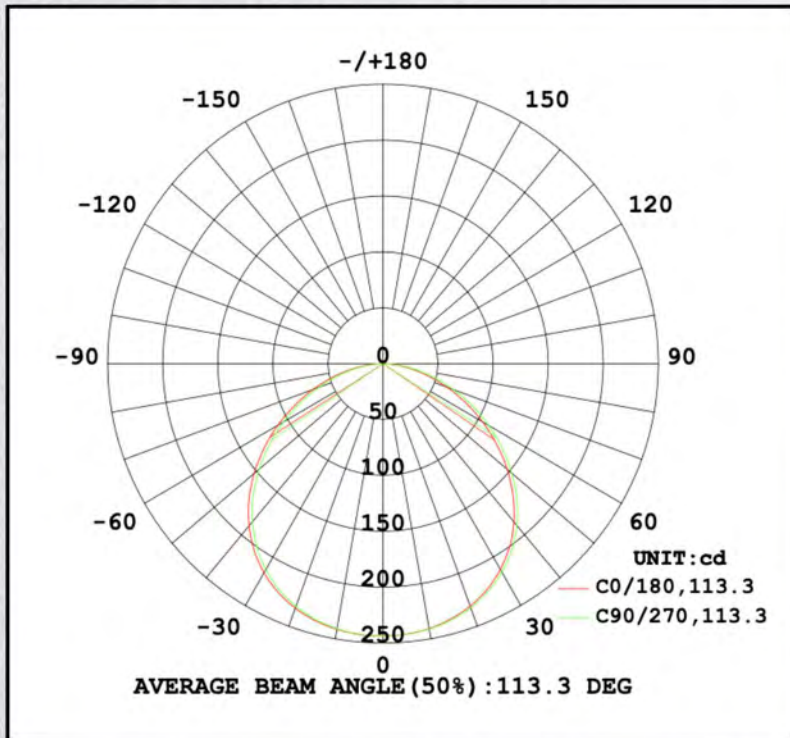


Chrome (CH)

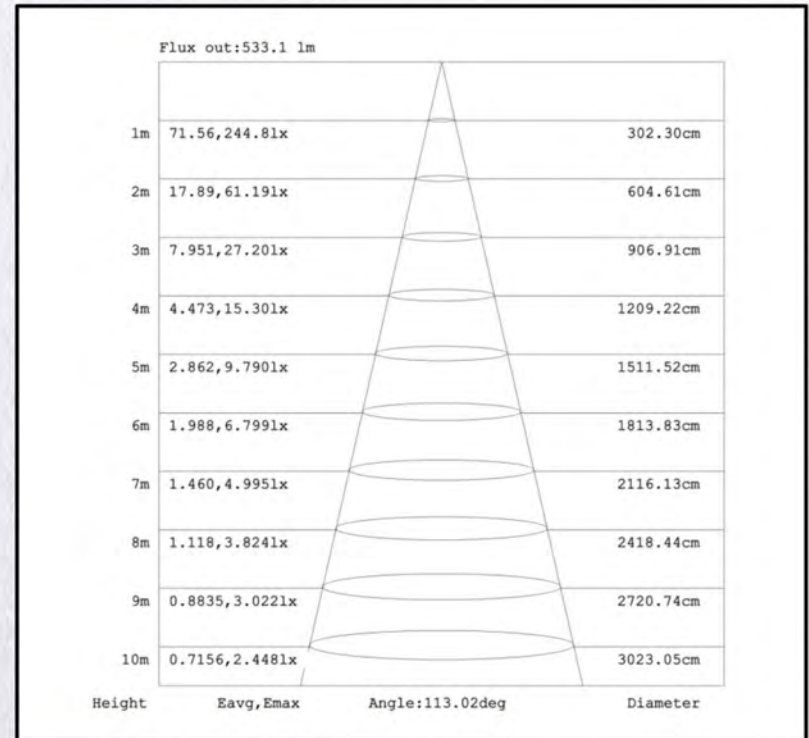
Multiple sizes free choice

Model #	Size(In)	Size (mm)	Watts	Lumens	CCT (000)	CRI	Volts	IP	Diffuser	Dimmable	Emergency Battery Pack E1,E2	Motion Sensor #2	Finish
21315 ACHUSC10 WH	ø5.5 x 0.7"	ø140 x 18	10	700	3/4/5 Switchable	80 or 90	120 or 240	21/44	PMMA	Yes, Triac	Optional 270Lm 2.5H	Optional Microwave	White (WH)
21316 ACHUSC13 WH	ø7.2 x 0.7"	ø183 x 18	13	910	3/4/5 Switchable	80 or 90	120 or 240	21/44	PMMA	Yes, Triac	Optional 270Lm 2.5H	Optional Microwave	White (WH)
21317 ACHUSC17 WH	ø9 x 0.8"	ø229 x 22	17	1190	3/4/5 Switchable	80 or 90	120 or 240	21/44	PMMA	Yes, Triac	Optional 270Lm 2.5H	Optional Microwave	White (WH)
21318 ACHUSC22 WH	ø11 x 0.8"	ø280 x 22	22	1540	3/4/5 Switchable	80 or 90	120 or 240	21/44	PMMA	Yes, Triac	Optional 270Lm 2.5H	Optional Microwave	White (WH)

Diagram showed model # 21315-ACHU3010-WH



Luminous Intensity Distribution Diagram



The Curves indicate the illuminated area and the average illumination when the luminaire is at difference distance

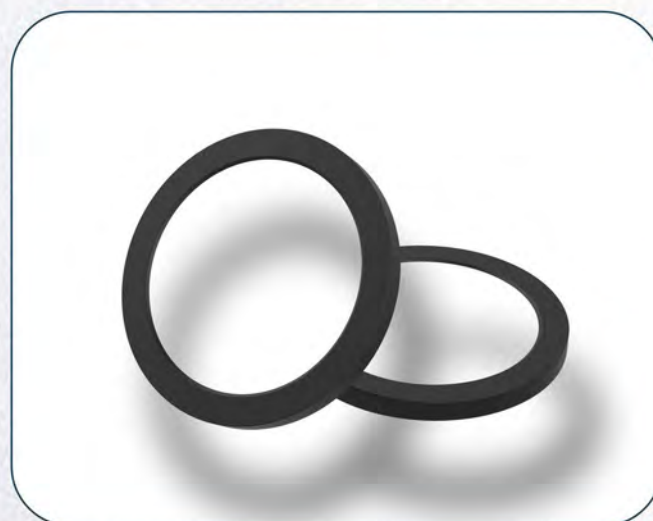
*The above diagrams represent similar performance for model # 21309/21310/21311/21312/21305/21306/21307/21308/21324/21325/21326/21328/21329/21330

Please contact us if any specified IES file is needed, info@tlight.cc





Decorative Frame



Decorative Frame



Decorative Frame



Decorative Frame

Free collocation to reduce inventory

A host with four colors, you can freely DIY switch different decorative color rings according to your own preferences. Only need to stock a host, equipped with a part of the four-color decorative rings, and then adjust the number of decorative color rings according to the sales situation, which can greatly reduce the inventory of the lamps and increase the working capital.



White (WH)



Brushed Nickel (BN)



Matt Black (BK)



Chrome (CH)

Multiple sizes free choice

Model #	Size(In)	Size (mm)	Watts	Lumens	CCT (000)	CRI	Volts	IP	Diffuser	Dimmable	Emergency Battery Pack E1,E2	Motion Sensor #2	Finish
21315 - MF	ø5.5 x 0.7"	ø140 x 18											White (WH)
21316 - MF	ø7.2 x 0.7"	ø183 x 18											Matt Black (BK)
21317 - MF	ø9.2 x 0.7"	ø234 x 18											Chrome (CH)
21318 - MF	ø11.2 x 0.7"	ø285 x 18											Brushed Nickel (BN)
													Dark Bronze (DB)

Tlight Ltd.

China address: 601, 3 Star Building, 1 Square Rd. Zhangmutou, Dongguan, Guangdong, China, postal Code 523622

India address: SDF Block G-05, Nsez Phase-II Noida-201305, India

T: (86) 769 8293 2282 F: (86) 769 8293 2280 E-mail: info@tlight.cc